

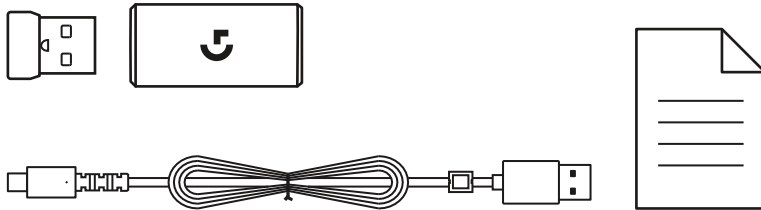
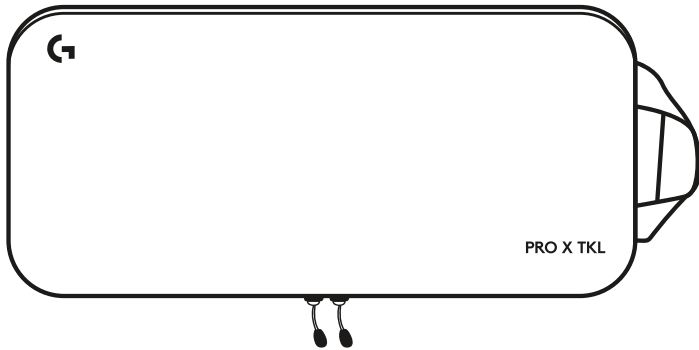
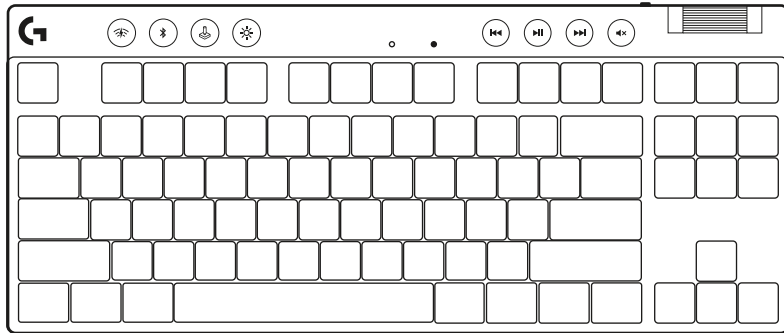
LOGITECH G PRO X TKL

LIGHTSPEED Wireless Gaming Keyboard
Clavier gaming LIGHTSPEED sans fil

SETUP GUIDE | GUIDE D'INSTALLATION



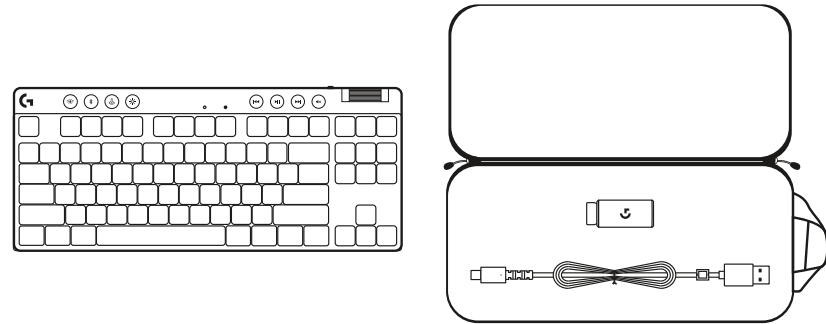
logitech 



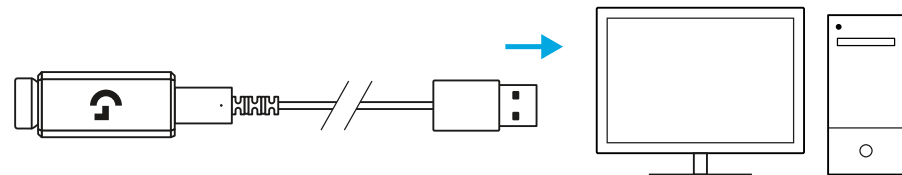
ENGLISH	3
FRANÇAIS.	9
ESPAÑOL	15
PORTUGUÊS	21

SETUP INSTRUCTIONS

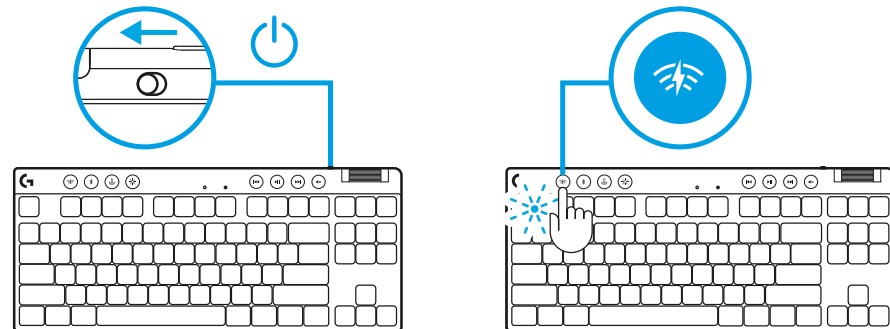
- 1 Remove keyboard, receiver/adaptor assembly, and USB cable from carrying case.



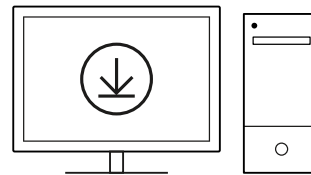
- 2 Insert the LIGHTSPEED receiver, with extender and cable into the PC USB port. Receiver can be used without the extender and cable by inserting it directly into a USB port if desired.



- 3 Turn on the keyboard by sliding the power button. The LIGHTSPEED button will light up to a cyan color.



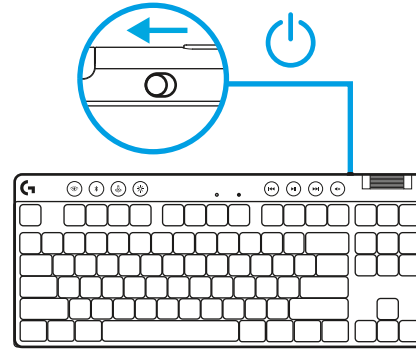
- 4 Download and install G HUB software to your PC/MAC for the best gaming experience (G HUB has onboarding story for features). Go to logitechG.com/ghub



logitechG.com/ghub

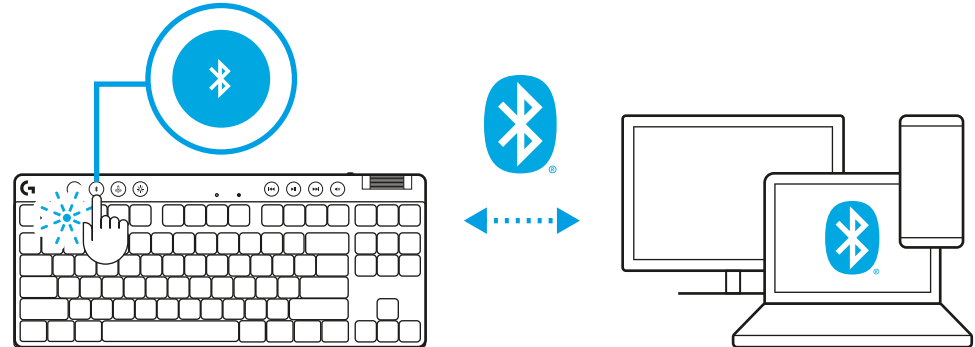
BLUETOOTH® CONNECTIVITY

1 Turn on the keyboard by sliding the button.



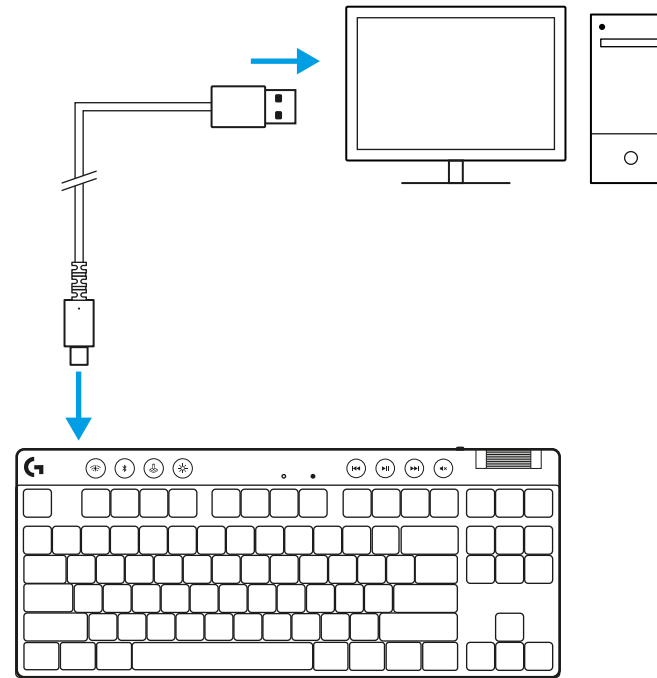
2 Press *Bluetooth*® button to select *Bluetooth*®. If there is no *Bluetooth*® device paired, the light will flash quickly - waiting to pair.

Follow *Bluetooth*® connection for your device to pair with the keyboard.

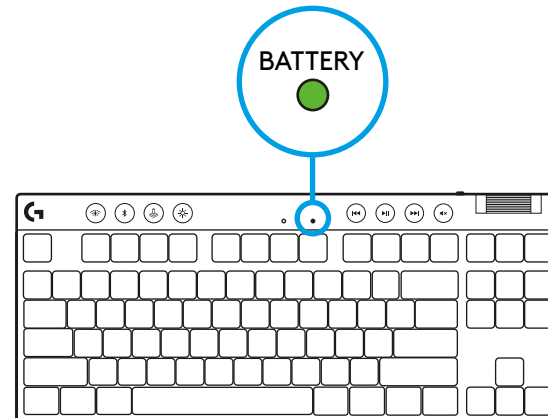


CHARGING YOUR KEYBOARD

- 1 Insert the *USB-C* cable into the port at the front of the keyboard.
- 2 Connect the cable to your PC.



Battery indicator light will pulse green while charging and be solid green when fully charged.



ONBOARD LIGHTING EFFECTS

The keyboard has 8 different lighting effects stored in its onboard memory. You can select and modify these by pressing the Brightness button and these keys:

Brightness + 1 = Rainbow > right

Brightness + 2 = Rainbow > left

Brightness + 3 = Rainbow center out

Brightness + 4 = Rainbow ^ up

Brightness + 5 = Color cycle

Brightness + 6 = Keystroke ripple

Brightness + 7 = Breathing cyan

Brightness + 8 = Custom lighting effect

Brightness + 9 = Custom lighting effect

Brightness + 0 = Solid cyan

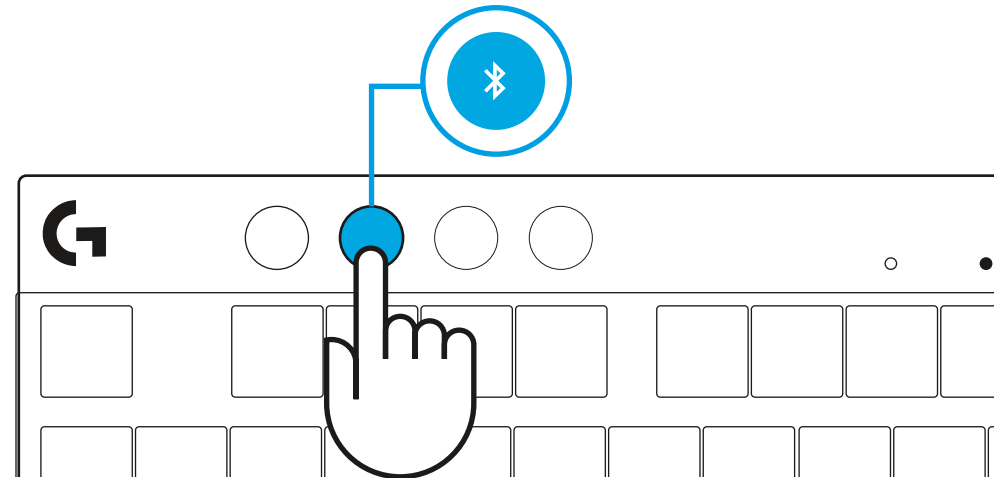
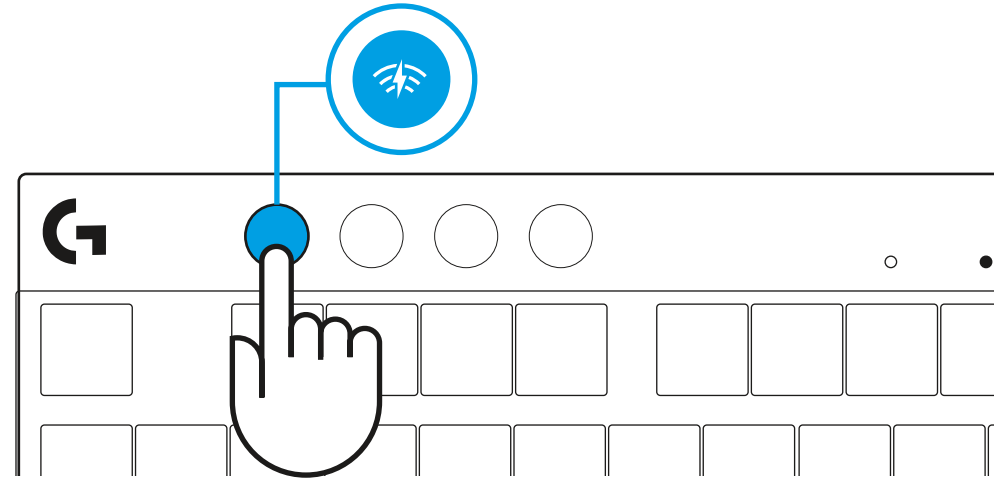
Brightness + - = Animation slower

Brightness + = = Animation faster

G HUB lighting controls will override these settings.

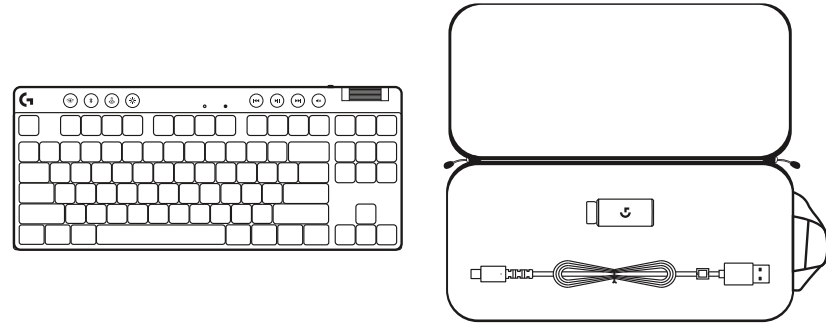
SWITCH BETWEEN LIGHTSPEED WIRELESS AND *BLUETOOTH*[®] DEVICES

Once connected, press the LIGHTSPEED button to choose the LIGHTSPEED connection, or the *Bluetooth*[®] button to choose the *Bluetooth*[®] connection, if you would like to type on different connected devices.

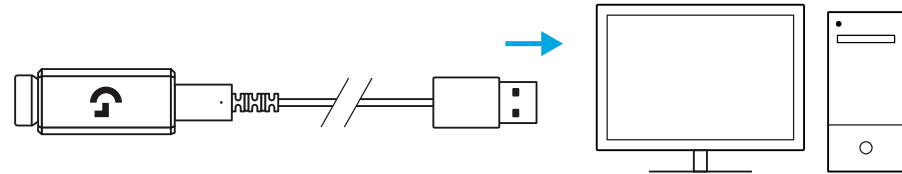


INSTRUCTIONS D'INSTALLATION

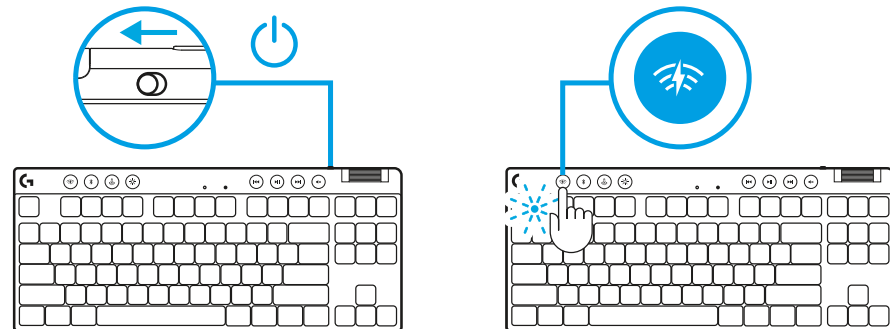
- 1 Sortez le clavier, l'assemblage récepteur/adaptateur et le câble USB de l'étui de transport.



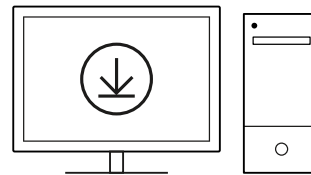
- 2 Insérez le récepteur LIGHTSPEED, avec la rallonge et le câble dans le port USB du PC. Le récepteur peut être utilisé sans la rallonge et le câble en l'insérant directement dans un port USB si vous le souhaitez.



- 3 Allumez le clavier en faisant glisser le bouton d'alimentation. Le bouton LIGHTSPEED s'allumera en cyan.



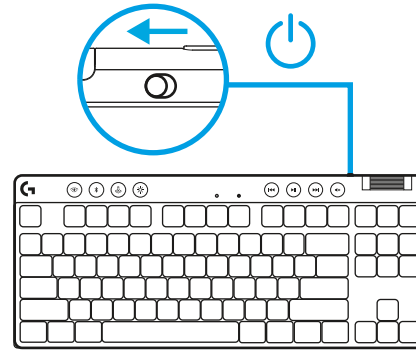
- 4 Téléchargez et installez le logiciel G HUB sur votre PC/MAC pour une expérience de jeu optimale (G HUB propose un parcours d'intégration pour les fonctionnalités). Accédez à logitechG.com/ghub



logitechG.com/ghub

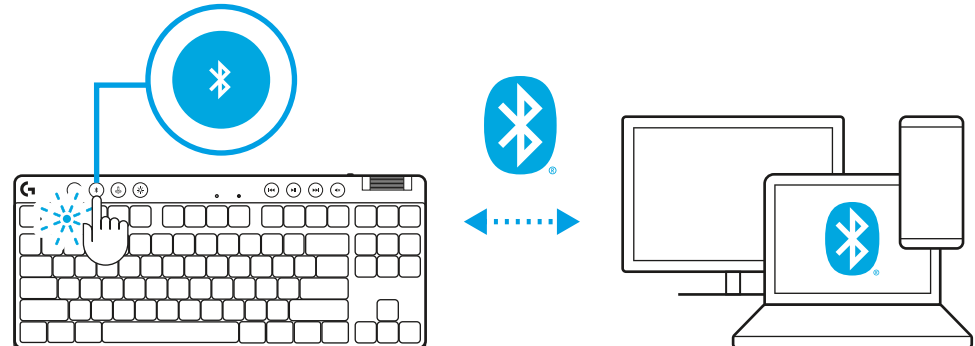
CONNECTIVITÉ BLUETOOTH®

1 Allumez le clavier en faisant glisser le bouton.



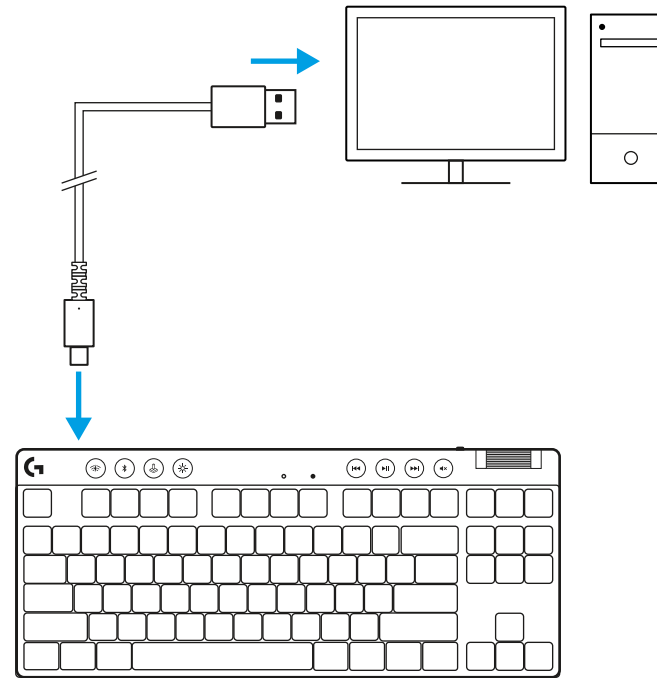
2 Appuyez sur le bouton *Bluetooth*® pour sélectionner le *Bluetooth*®. S'il n'y a pas de dispositif *Bluetooth*® couplé, le témoin lumineux clignotera rapidement en attente de couplage.

Suivez la connexion *Bluetooth*® pour que votre dispositif se couple avec le clavier.

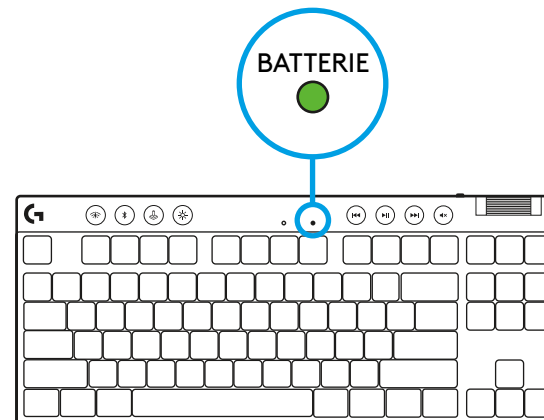


CHARGE DE VOTRE CLAVIER

- 1 Insérez le câble *USB-C* dans le port situé à l'avant du clavier.
- 2 Connectez le câble à votre PC.

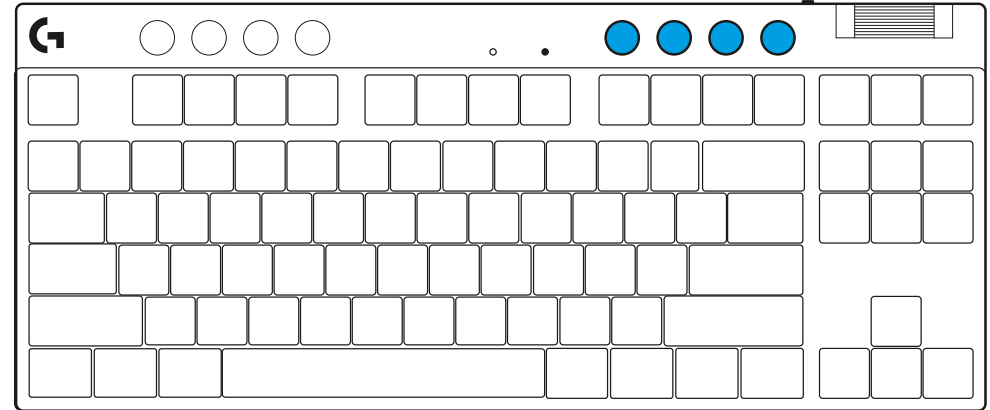


Le témoin lumineux de la batterie clignotera en vert pendant la charge et restera allumé en vert en continu une fois entièrement chargé.



Commandes multimédia

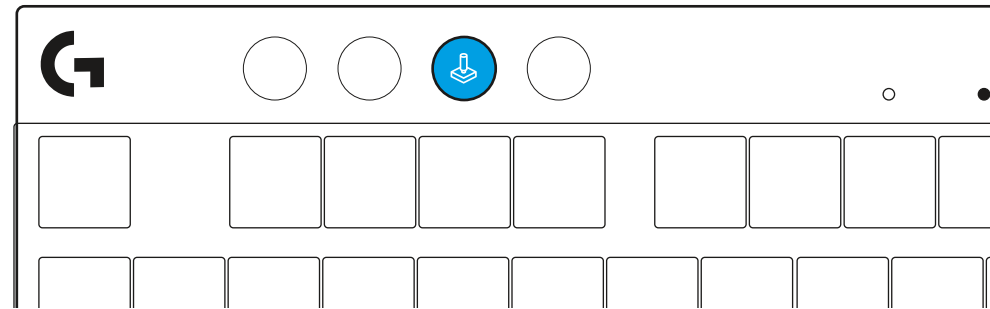
PRO X TKL inclut des commandes multimédia. Retour, Lecture/Pause, Avance et Muet, avec une molette contrôlant le volume de votre dispositif.



Mode Jeu

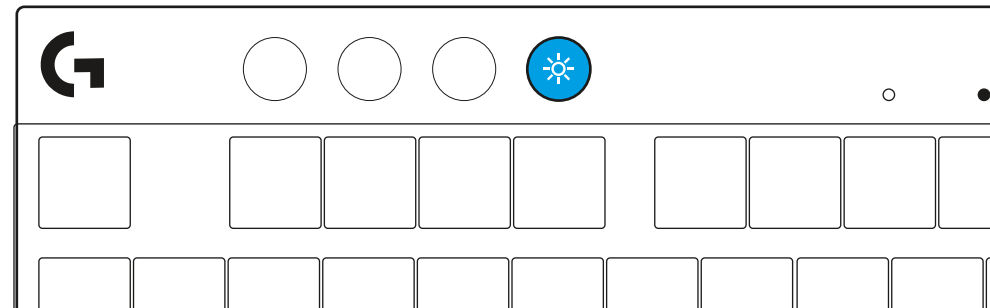
En appuyant sur le bouton Mode Jeu, vous bloquerez les touches Windows et Menu contextuel. D'autres touches peuvent être bloquées à l'aide du logiciel G HUB.

Le verrouillage du mode Jeu (FN+mode Jeu) permet de bloquer le bouton Mode Jeu et de prévenir l'activation ou la désactivation du mode.



Luminosité

Réglez la luminosité de l'éclairage en appuyant sur le bouton Luminosité.



EFFETS D'ÉCLAIRAGE INTÉGRÉS

Le clavier a 8 effets d'éclairage différents stockés dans sa mémoire. Vous pouvez les sélectionner et en changer en appuyant sur le bouton Luminosité et les touches suivantes:

Luminosité + 1 = Arc en ciel > droit

Luminosité + 2 = Arc en ciel > gauche

Luminosité + 3 = Arc en ciel centre

Luminosité + 4 = Arc en ciel ^ haut

Luminosité + 5 = Cycle de couleur

Luminosité + 6 = Ondulation frappe

Luminosité + 7 = Cyan clignotant

Luminosité + 8 = Effet d'éclairage personnalisé

Luminosité + 9 = Effet d'éclairage personnalisé

Luminosité + 0 = Cyan continu

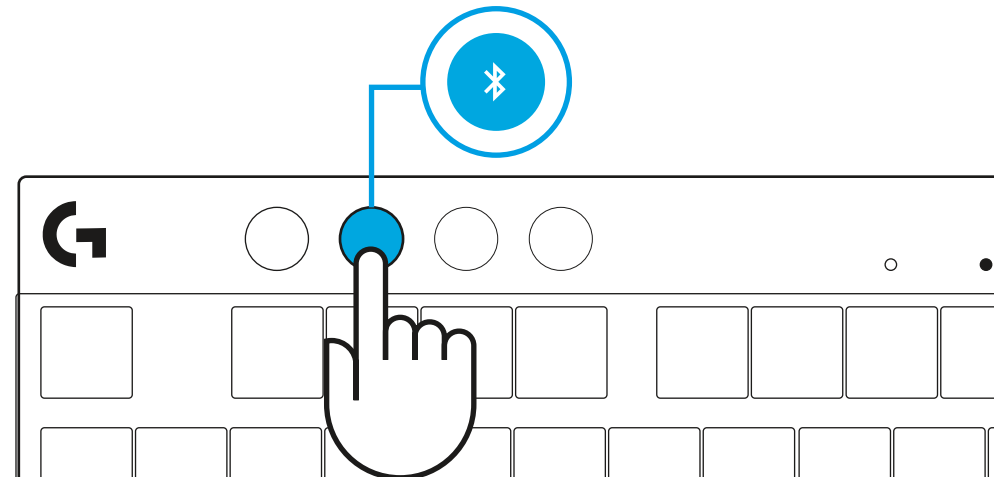
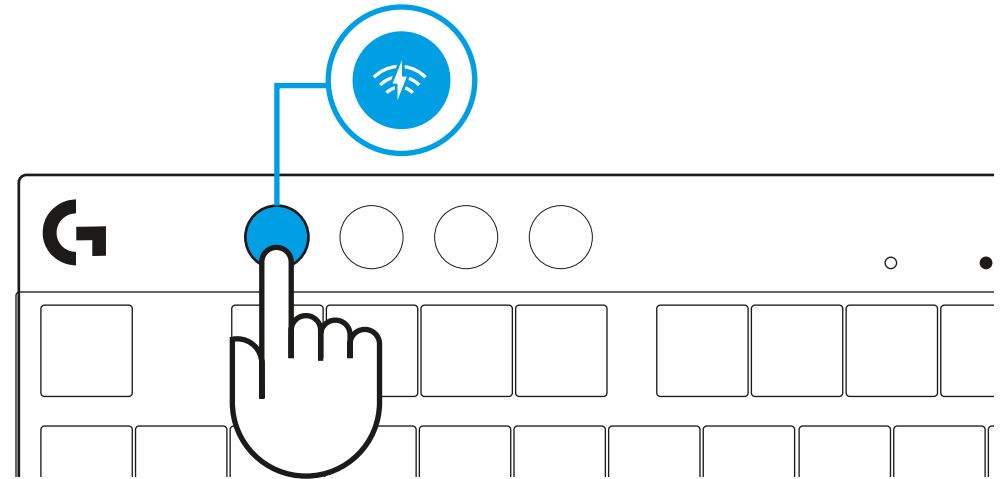
Luminosité + = Animation plus lente

Luminosité + = Animation plus rapide

Les commandes d'éclairage G HUB remplaceront ces paramètres.

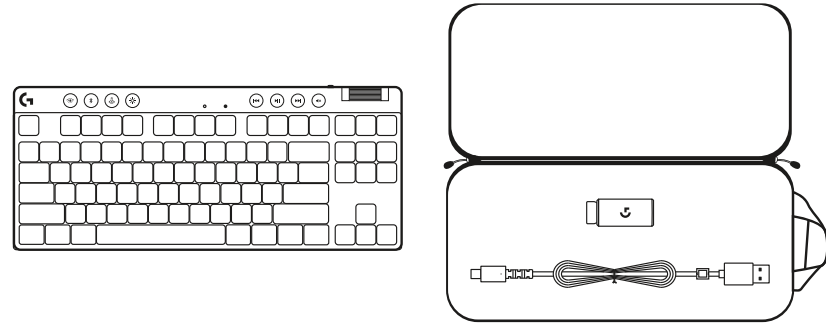
BASCULEZ ENTRE LES DISPOSITIFS SANS FIL LIGHTSPEED ET BLUETOOTH®

Une fois connecté, appuyez sur le bouton LIGHTSPEED pour choisir la connexion LIGHTSPEED ou le bouton *Bluetooth*® pour choisir la connexion *Bluetooth*® si vous souhaitez taper sur plusieurs dispositifs connectés.

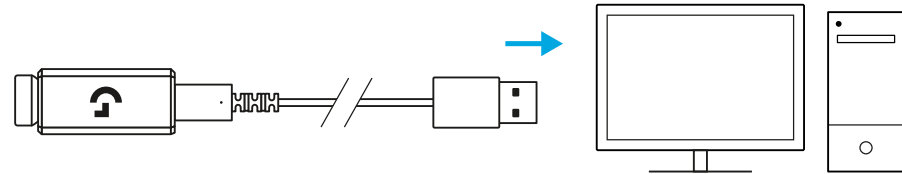


INSTRUCCIONES DE CONFIGURACIÓN

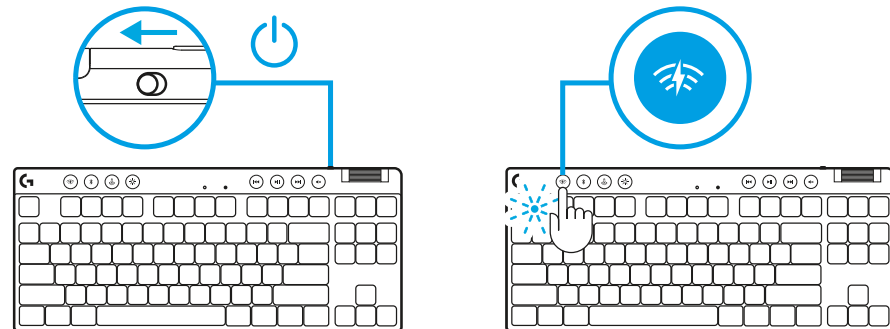
- 1 Extrae de la funda protectora el teclado, el conjunto de receptor/adaptador y el cable USB.



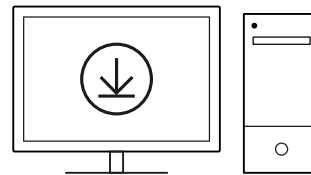
- 2 Inserta el receptor LIGHTSPEED, con el alargador y el cable, en el puerto USB de la PC. El receptor también se puede usar sin el alargador y el cable insertándolo directamente en un puerto USB.



- 3 Desliza el botón de encendido para encender el teclado. El botón de LIGHTSPEED se iluminará con luz cian.



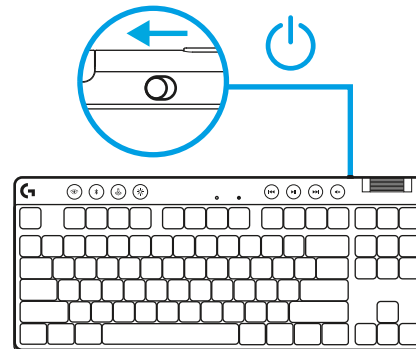
- 4 Descarga e instala el software G HUB en tu PC/MAC para una experiencia de juego óptima (G HUB ofrece integración de funciones). Ve a logitechG.com/ghub



logitechG.com/ghub

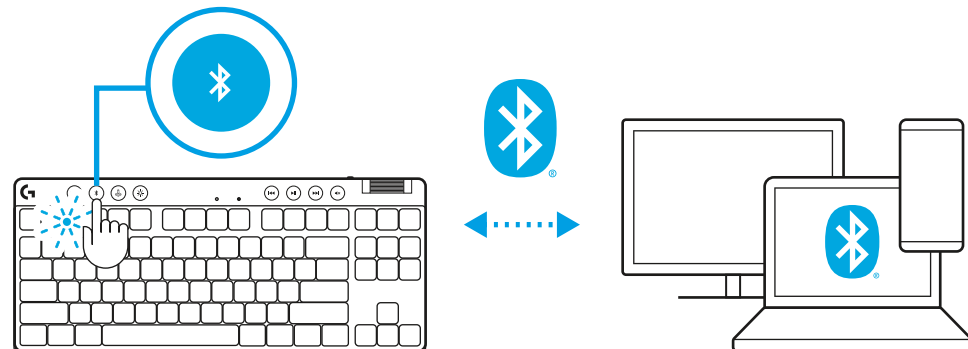
CONECTIVIDAD BLUETOOTH®

1 Desliza el botón para encender el teclado.



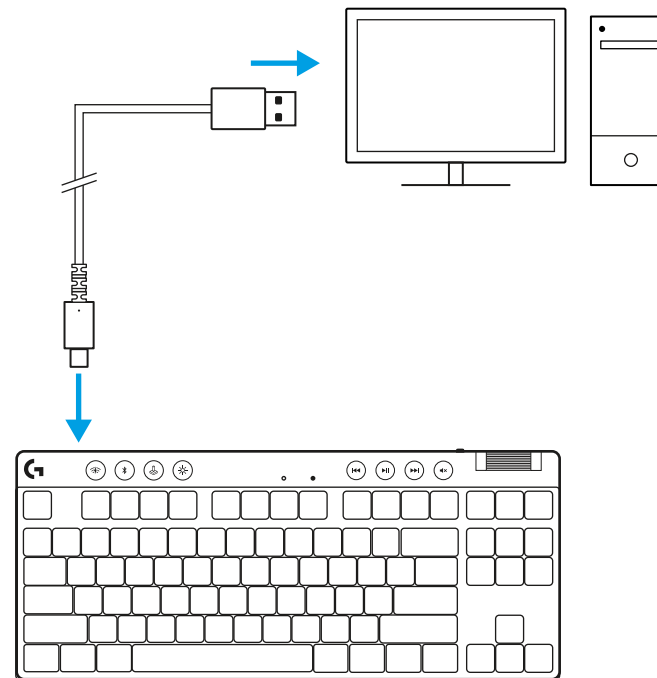
2 Presiona el botón *Bluetooth*® para seleccionar *Bluetooth*®. Si no hay ningún dispositivo *Bluetooth*® emparejado, la luz emitirá destellos rápidos, a la espera del emparejamiento.

Sigue las instrucciones de conexión *Bluetooth*® de tu dispositivo para emparejarlo con el teclado.

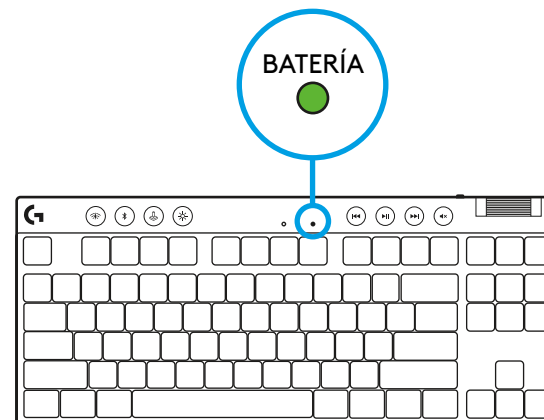


CARGA DEL TECLADO

- 1 Inserta el cable *USB-C* en el puerto situado en la parte frontal del teclado.
- 2 Conecta el cable a la PC.

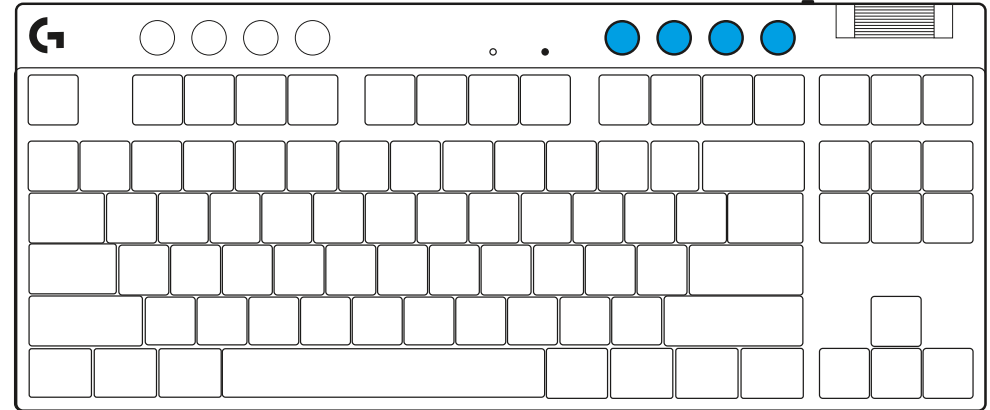


El indicador luminoso de carga emitirá pulsos verdes durante el proceso y se volverá permanente al completarse la carga.



Controles multimedia

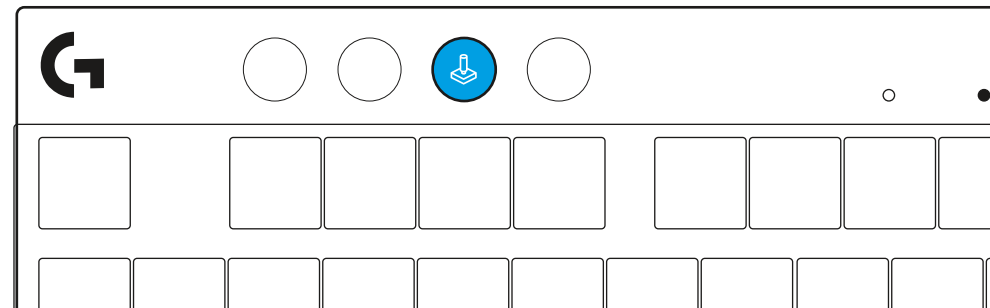
PRO X TKL incluye controles multimedia. Permiten saltar a la pista anterior, reproducir/poner en pausa, saltar a la pista siguiente y silenciar, con un mando giratorio que controla el volumen del dispositivo.



Modo de juego

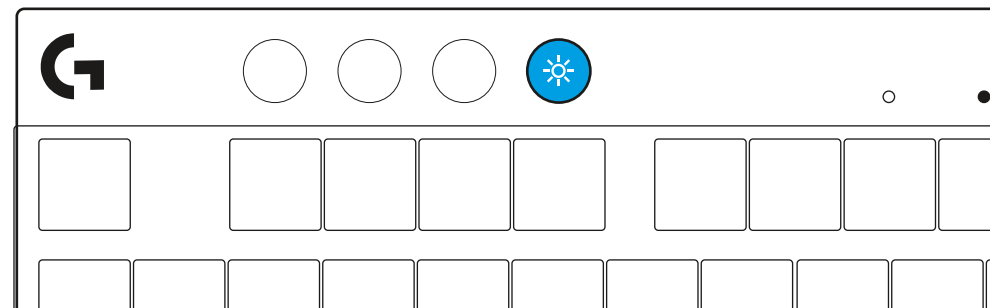
Al presionar el botón de modo de juego se bloquea la pulsación de las teclas de Windows y menú contextual. Es posible bloquear otras teclas usando el software G HUB.

Bloqueo de modo de juego (FN+Modo de juego), bloquea el botón correspondiente e impide que se active/desactive el modo de juego.



Brillo

Ajusta el brillo de la iluminación presionando el botón de brillo.



EFECTOS DE ILUMINACIÓN INTEGRADOS

El teclado tiene 8 efectos de iluminación guardados en la memoria integrada. Puedes seleccionar y modificar esos efectos presionando el botón de brillo y luego estas teclas:

Brillo + 1 = Arcoíris > derecha

Brillo + 2 = Arcoíris > izquierda

Brillo + 3 = Arcoíris del centro al exterior

Brillo + 4 = Arcoíris ^ arriba

Brillo + 5 = Ciclo de colores

Brillo + 6 = Onda de pulsaciones

Brillo + 7 = Respiración cian

Brillo + 8 = Efecto de iluminación personalizado

Brillo + 9 = Efecto de iluminación personalizado

Brillo + 0 = Cian permanente

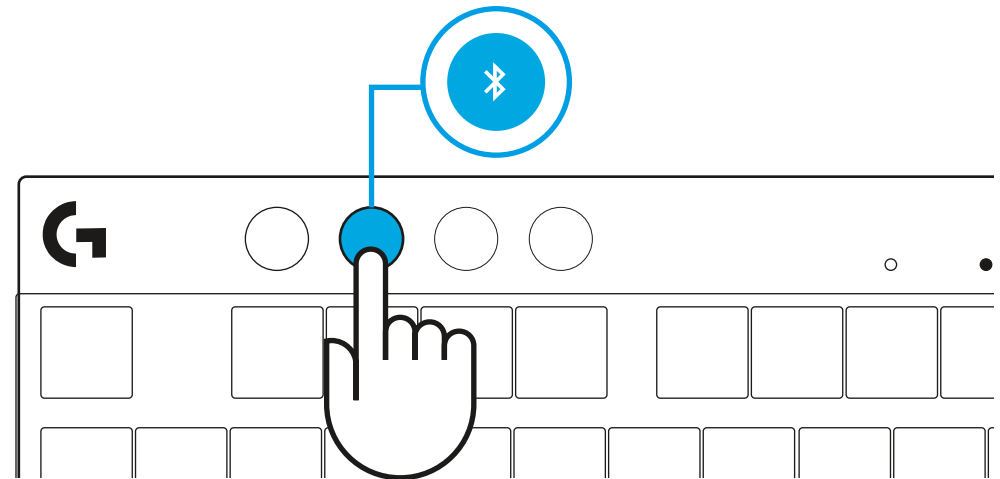
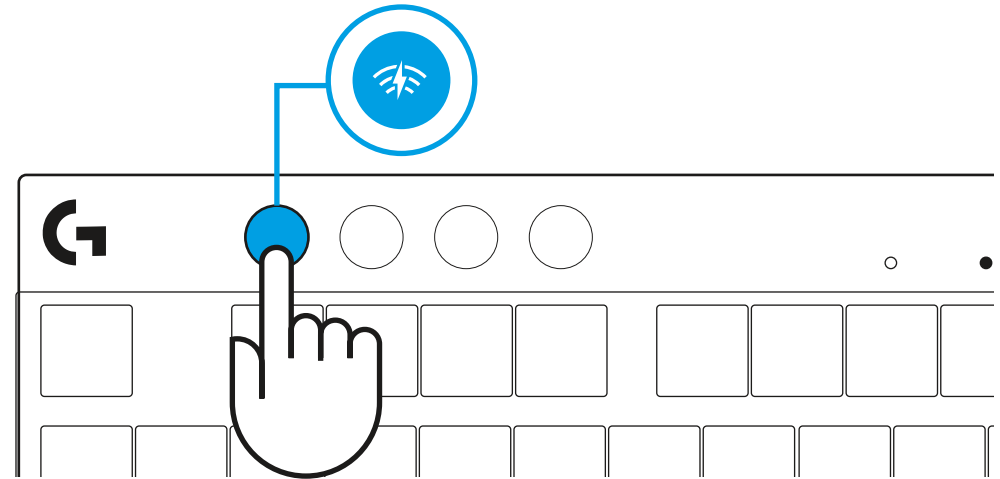
Brillo + - = Animación lenta

Brillo + = = Animación rápida

Los controles de iluminación de G HUB anularán esta configuración.

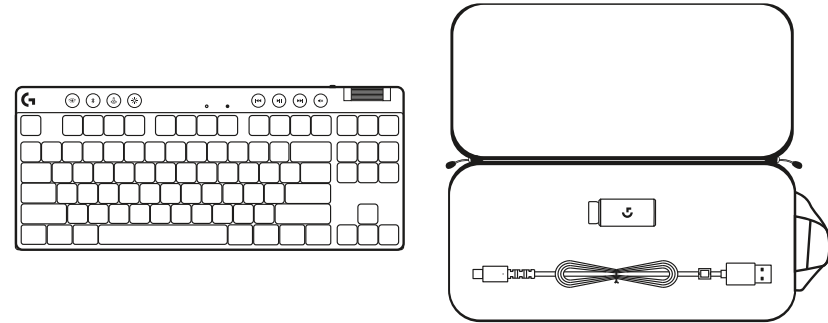
ALTERNAR ENTRE DISPOSITIVOS LIGHTSPEED INALÁMBRICOS Y BLUETOOTH®

Tras establecerse la conexión, presiona el botón de LIGHTSPEED para elegir la conexión LIGHTSPEED o el botón *Bluetooth*® para elegir la conexión *Bluetooth*®, si quieres escribir en distintos dispositivos conectados.

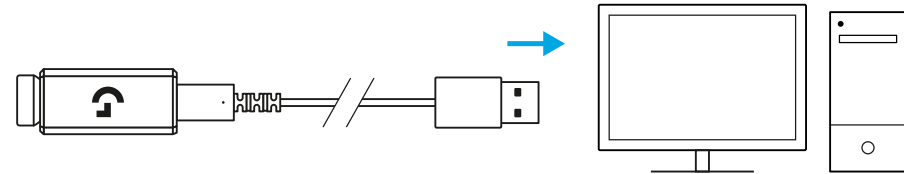


INSTRUÇÕES DE CONFIGURAÇÃO

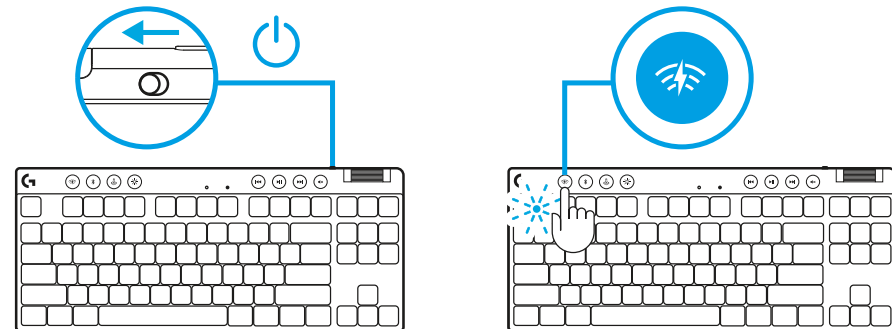
- 1 Retire o teclado, conjunto de receptor/adaptador e cabo USB do estojo de transporte.



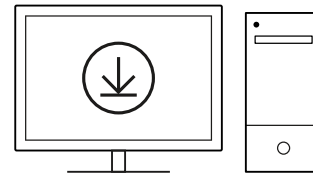
- 2 Insira o receptor LIGHTSPEED, com extensor e cabo na porta USB do PC. O receptor pode ser usado sem o extensor e o cabo, inserindo-o diretamente em uma porta USB, se desejado.



- 3 Ligue o teclado deslizando o botão de ligar/desligar. O botão LIGHTSPEED acenderá até uma cor de ciano.



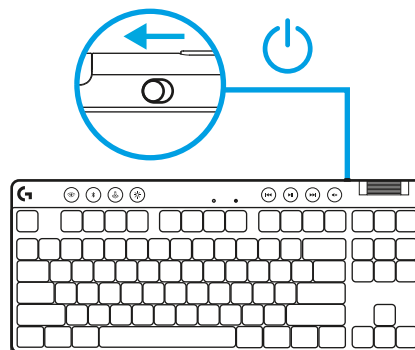
- 4 Baixe e instale o software G HUB em seu PC/MAC para obter a melhor experiência de jogo (a G HUB tem um histórico integrado para recursos). Vá para logitechG.com/ghub



logitechG.com/ghub

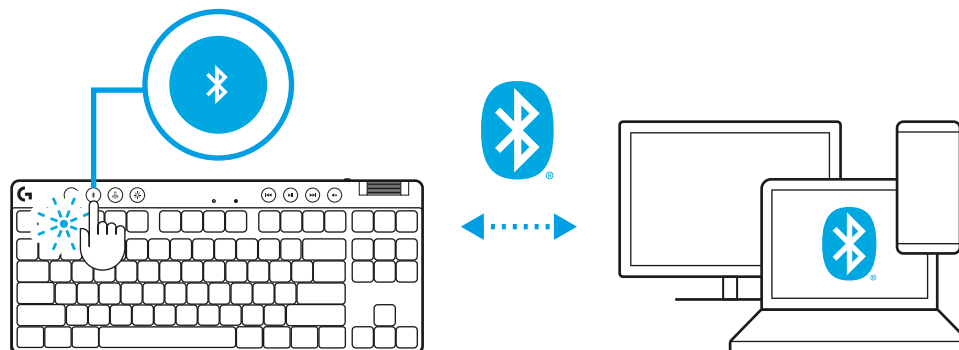
CONECTIVIDADE BLUETOOTH®

1 Ligue o teclado deslizando o botão.



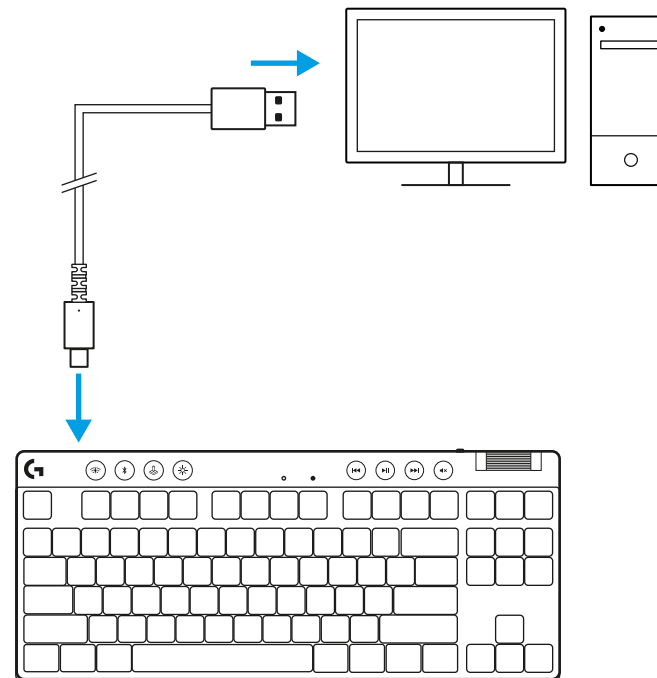
2 Pressione o botão *Bluetooth*® para selecionar *Bluetooth*®. Se não há um dispositivo *Bluetooth*® pareado, a luz piscará rapidamente - aguardando o pareamento.

Siga a conexão *Bluetooth*® para que seu dispositivo seja pareado com o teclado.

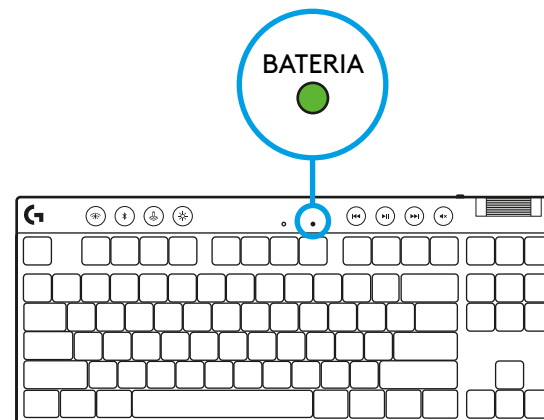


CARREGANDO SEU MOUSE

- 1 Insira o *cabo USB-C* na porta na parte da frente do teclado.
- 2 Conecte o cabo USB ao PC.

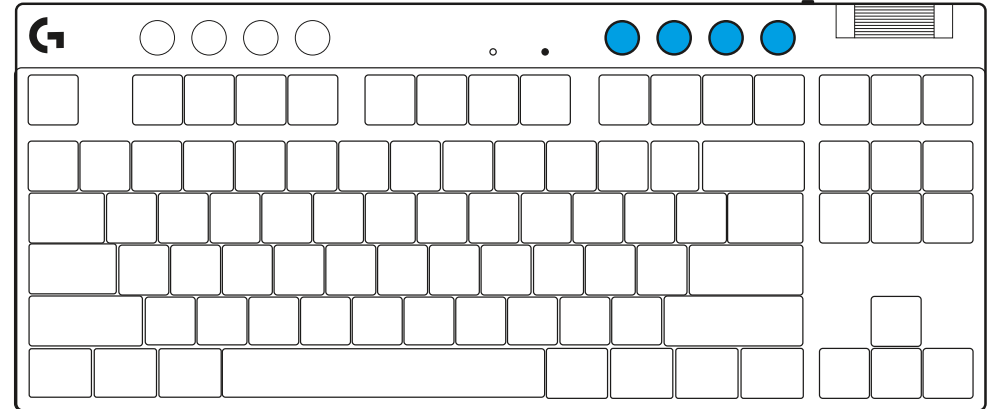


A luz indicadora de bateria pulsará verde durante a carga e será verde sólido quando totalmente carregada.



Controles de mídia

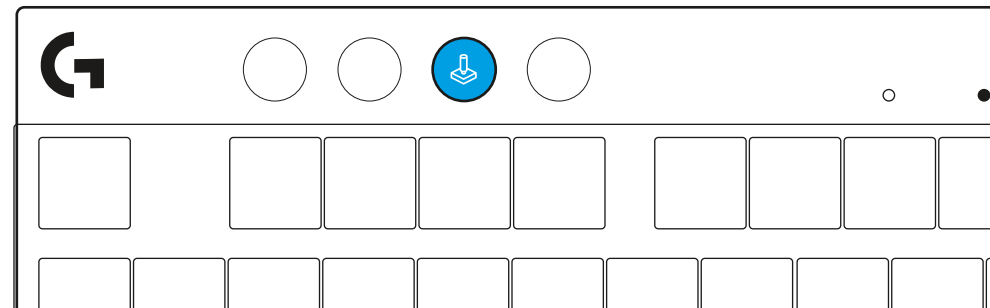
O PRO X TKL inclui controles de mídia. Pular para trás, jogar/pausar, pular para frente e tecla de silêncio, com um controle de volume de seu dispositivo.



Modo de jogo

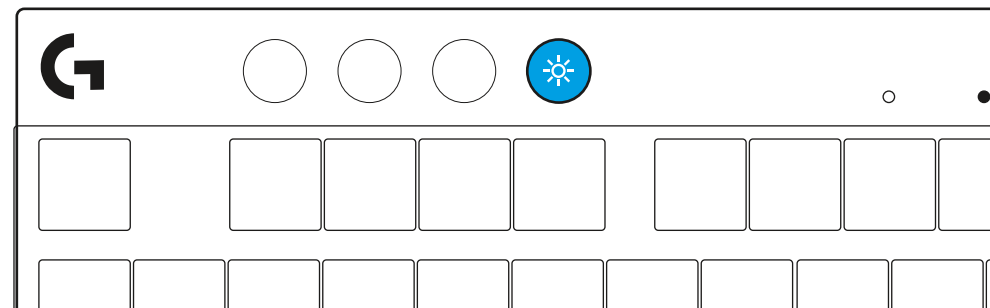
Pressionar o botão Modo de jogo bloqueia as teclas Windows e Menu de contexto quando pressionado. Teclas adicionais podem ser bloqueadas usando o software G HUB.

Bloqueio do Modo de jogos (FN+Modo de jogos), bloqueia o botão de Modo de jogos e impede que o Modo de jogos seja ligado ou desligado.



Brilho

Ajuste a iluminação pressionando o botão de iluminação.



EFEITOS DE ILUMINAÇÃO INTEGRADOS

O teclado tem 8 efeitos de iluminação diferentes armazenados em sua memória onboard. Você pode selecioná-los e modificá-los pressionando o botão Iluminação e estas teclas:

Iluminação + 1 = Rainbow > direita

Iluminação + 2 = Rainbow > esquerda

Iluminação + 3 = Rainbow centro

Iluminação + 4 = Rainbow ^ cima

Iluminação + 5 = Ciclo de cor

Iluminação + 6 = Ripple de teclas

Iluminação + 7 = Ciano respirando

Iluminação + 8 = Efeito de iluminação personalizado

Iluminação + 9 = Efeito de iluminação personalizado

Iluminação + 0 = Ciano sólido

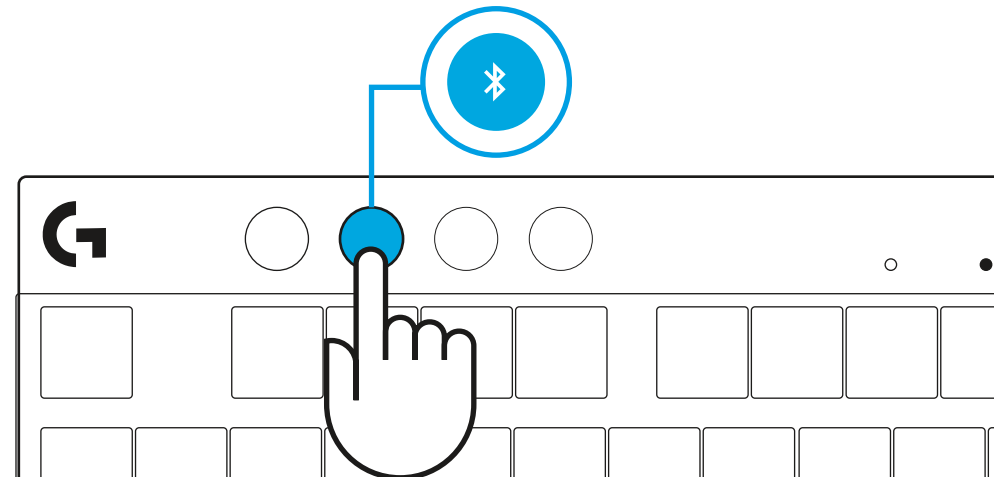
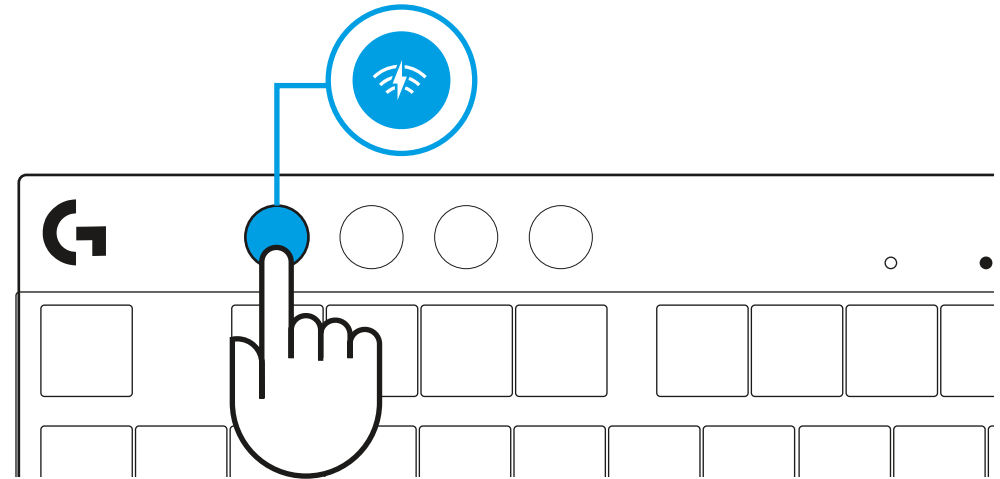
Iluminação + - = Animação mais lenta

Iluminação + = Animação mais rápida

Os controles de iluminação G HUB anularão essas configurações.

ALTERNAR ENTRE DISPOSITIVOS SEM FIO DE VELOCIDADE DA LUZ E DISPOSITIVOS *BLUETOOTH*®

Após a conexão, pressione o botão LIGHTSPEED para selecionar a conexão LIGHTSPEED ou o botão *Bluetooth*® para selecionar a conexão *Bluetooth*®, se quiser digitar em dispositivos diferentes conectados.





©2023 Logitech. Logitech, Logitech G, Logi and their respective logos are trademarks or registered trademarks of Logitech Europe S.A. and/or its affiliates in the U.S. and other countries. All other trademarks are the property of their respective owners. Logitech assumes no responsibility for any errors that may appear in this manual. Information contained herein is subject to change without notice. The *Bluetooth*® word mark and logos are registered trademarks owned by Bluetooth SIG, Inc. and any use of such marks by Logitech is under license.

©2023 Logitech. Logitech, Logitech G, Logi et leurs logos respectifs sont des marques commerciales ou déposées de Logitech Europe S.A. et/ou de ses sociétés affiliées aux États-Unis et dans d'autres pays. Toutes les autres marques sont la propriété exclusive de leurs détenteurs respectifs. Logitech décline toute responsabilité en cas d'erreurs susceptibles de s'être glissées dans le présent manuel. Les informations énoncées dans ce document peuvent faire l'objet de modifications sans préavis. La marque et les logos *Bluetooth*® sont des marques déposées détenues par Bluetooth SIG, Inc. et sont utilisés par Logitech sous licence.

WEB-621-002315 002